

Carrier 30 RA 070

Specifications

Производитель	Carrier
Тип	30 RA 070
Тип продукта	Air Cooled Chiller
кВт	68
Мощность, тонн	19,3
Хладагент	Freon
Pump	✓
Масса	611
Sizes	2100x1100x1300 mm (LxWxH)
Stock	1

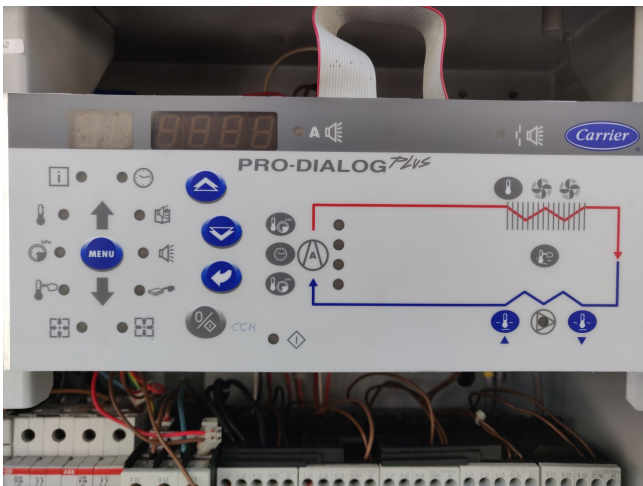
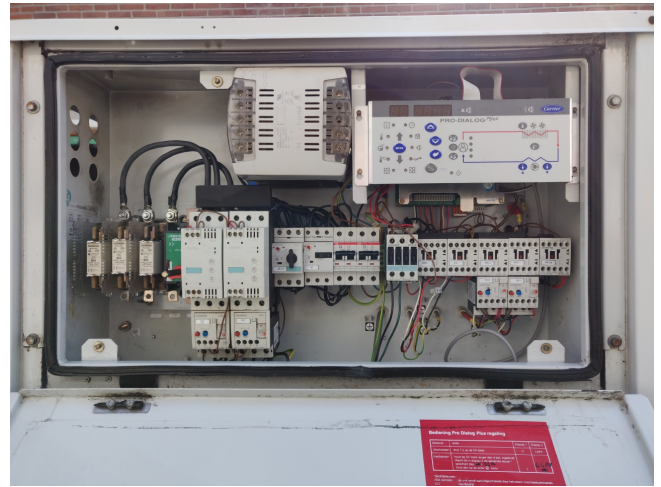


Description

Used Carrier 30 RA 070

Used, well maintained Carrier 30 RA 070-A0264-PEE Air-cooled water chiller // 2x PERFORMER SZ160T4CC Compressors // 1x Fan // Refrigerant FREON // year of build = 2003 For all the other specs, see the picture of the manufacturer model plate or the attached pdf file (if available) *Why choose for HOSBV? Were not only the largest used refrigeration specialist in Europe, but also, we deliver all equipment including an extensive test, warranty and industrial cleaning. *Optional we can also arrange the logistics.





Carrier s.a. BP 49 Route de TMB 1128 Moutier (FRANCE) Tel: 33 (0) 4 72 25 21 08 Fax: 33 (0) 4 72 25 23 88

REF : 30RA-070-A0264-PEE-080 S/N : 12w313072

Date: 27/08/03 Page: 1/7

LISTE DE PIÈCES SPARE PARTS LIST

DESCRIPTION TYPE	PLAN	Item	CARRIER TYPE		KIT	QTY
			REFERENCE			
CARD -REGULATION-	99BE-407---	592-E-	100	88EE---	510.55402EE-	1
COMPRESSOR	99BE-407---	592-E-	010	520B-508---	092--EE-	1
EXPANDER-PLATES-	30RA-406---	032-E-	310	-D0--12CA-005--EE-		2
EXPANSION TANK	30RA-407---	562-E-	001	-E0--12CM-004--EE-		1
FILTER -DRYER-	30RA-407---	282-E-	007	-XM--12PA-004--EE-		1
BASKET	30RA-406---	032-E-	412	-XM--12EA-022--EE-		1
BASKET	30RA-407---	282-E-	025	-UX--12BB-006--EE-		6
BASKET	30RA-407---	282-E-	026	-UX--12BB-008--EE-		2
BAUSE	30RA-407---	282-E-	017	-DN--12EA-052--EE-		1
GUARD	30RA-408---	712-E-	013	30RA-408---	662--EE-	1
HEATER -EXCHANGE PLATES-	30RA-406---	032-E-	383	30RA-501---	122--EE-A	1
MOTOR-FAN	30RA-406---	032-E-	550	-DK--12AB-035--EE-		1
PRESSOSTAT	30RA-409---	202-E-	005	-HB--12BE-009--EE-		1
PROPPELLER FAN	30RA-408---	772-E-	011	30RX-615---	602--EE-	1
PUMP-COOLER-	30RA-407---	282-E-	002	30RA-506---	572--EE-	1
SENSOR -TEMPERATURE-	30RA-409---	202-E-	001	-HH--79N2-047--C--		3
SIGHT -LIQUID-	30RA-406---	032-E-	610	-XS--12CA-002--EE-		1
SWITCH-FL0W-	30RA-407---	282-E-	016	-CY--12MA-007--EE-		1
DYNODIC I CKT	99BE-407---	592-E-	011	520B-508---	082--EE-	1
TRANSUCER HP	30RA-407---	202-E-	006	-OP--12DA-039--EE-		1
TRANSUCER LP-OIL	30RA-409---	202-E-	003	-OP--12DA-040--EE-		1
VALVE	30RA-407---	282-E-	016	-XL--12AU-052--EE-		1
VALVE -ANGLE-	30RA-407---	842-E-	002	-XL--12AL-002--EE-		3
VALVE -LIQUID-	30RA-408---	552-E-	006	-XL--12AL-003--EE-		1
VALVE -WATER FLOW-	30RA-407---	282-E-	013	-XL--12QE-001--EE-		1
VALVE-CHECK-	30RA-408---	552-E-	001	-EC--30DM-061--C--		1
VALVE-CHECK-	30RA-408---	562-E-	001	-EC--30DM-062--C--		3
VALVE-EXPANSION-	30RA-406---	032-E-	370	-YA--12DM-017--EE-		5
VALVE-SAFETY-	30RA-409---	192-E-	002	-UM--12AQ-025--EE-		1
VALVE-SAFETY-	30RA-407---	282-E-	011	-UM--12LA-025--EE-		1



